



PC326T-50-4

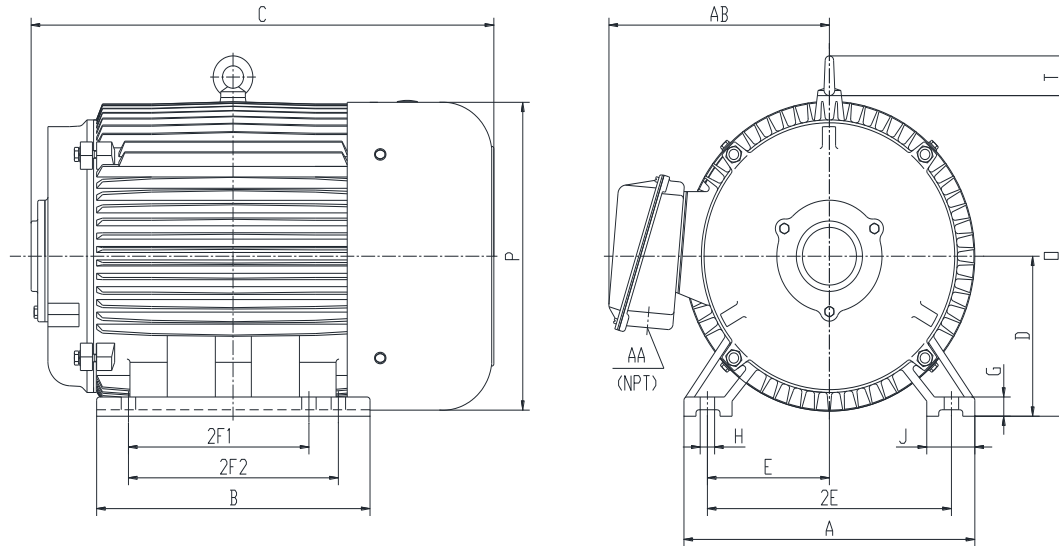
CONVERTER

DESIGNED FOR USE WITH ROTARY PHASE CONVERTER UNITS

TOTALLY ENCLOSED FAN COOLED

SPIKE RESISTANT WIRE (2200V PEAK VOLTAGE SPIKE RATING)

Factory Certified for T2B Class I, Division II, Groups A,B,C & D and Class II, Division II, Groups F & G



DIMENSIONS

HP	RPM	Frame	MOUNTING													
			A	B	C	D	G	H	J	E	2E	2F1	2F2	O	P	T
50	1800	326T	15.5	14.7	25.9	8	1	0.66	2.75	6.25	12.5	10.5	12	15.9	15.7	2.6

Conduit Box		Bearings		Mount
AA	AB	DE	ODE	
2	12.3	6312	6312	F1

BEARING LUBRICATION: The bearings come lubricated with Mobil Polyrex EM Polyurea Grease. It is recommended that you add some additional lubrication when the motor is installed.

Three options (brands) for suitable lubrication include, but are not limited to, the following:

- 1.) Mobil Polyrex EM
- 2.) Citco Polyurea MP
- 3.) Conoco Phillips Polytac EP





PC326T-50-4

CONVERTER

DESIGNED FOR USE WITH ROTARY PHASE CONVERTER UNITS

TOTALLY ENCLOSED FAN COOLED

SPIKE RESISTANT WIRE (2200V PEAK VOLTAGE SPIKE RATING)


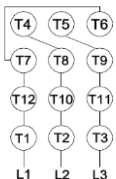



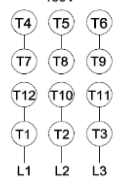
Factory Certified for T2B Class I, Division II, Groups A,B,C & D and Class II, Division II, Groups F & G

PERFORMANCE DATA

HP	RPM	Frame	Voltage	Frequency (Hz)	Full Load S.F.	Insulation Class	NEMA Design	Slip (%)	NEMA Code	Enclosure Type	IP Rating	Max. Ambient
50	1775	326T	208-230/460	60	1.15	F	B	1.4	G	TEFC	55	40 °C

Amps (460V)		Efficiency (%)		Power Factor	Torque (ft-lb)			DE Bearing	ODE Bearing	Connection	Weight (lbs.)
FLA	LRA	NOM.	MIN.	100%	FLT	LRT %	BDT %				
58.3	362	91.7	90.2	0.89	148.4	190	270	6312	6312	12 Lead 2Δ/Δ	552

NAME PLATE

 ROTARY PHASE CONVERTER INVERTER DUTY 20:1 VT; 10:1 CT Hernando, MS 38632										CONNECTION DIAGRAMS 208-230V 	
CAT NO.		PC326T-50-4				FRAME		326T	WT/LBS		552
HZ	60	S.F.	1.15	HZ	50	S.F.	1.0	ENCL	TEFC	IP	55
HP	50	RPM	1800	HP	50	RPM	1500	DUTY	CONT	DES	B
VOLTS		208-230/460		VOLTS		190/380		AMB	40 °C	INS	F
AMPS		124-116.6/58.3		AMPS		138/69		BRG DE/ODE		6312/6312	
CODE	G	P.F.	0.89	CODE	F	P.F.	0.90	LUB: Mobil Polyrex EM			
EFF	91.7	MIN	90.2	EFF	89.2	MIN	86.2	SER NO			
 AC INDUCTION CONVERTER										 	
										460V 	

APPLICATIONS:

Specifically designed for use as the converter component for rotary phase converters.